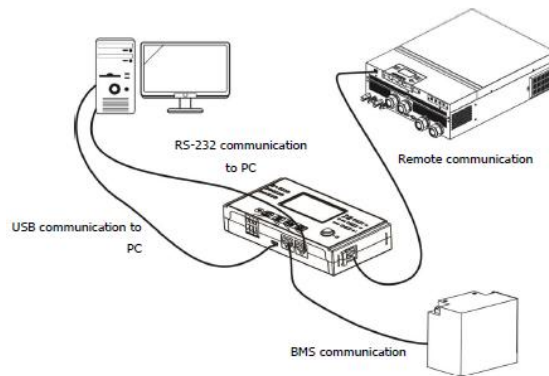


Communication Test

Step1. Connect the unit and the PC via RS-232 communication cable.

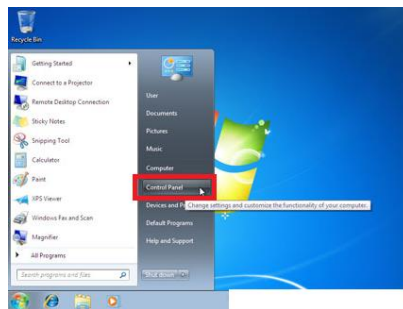


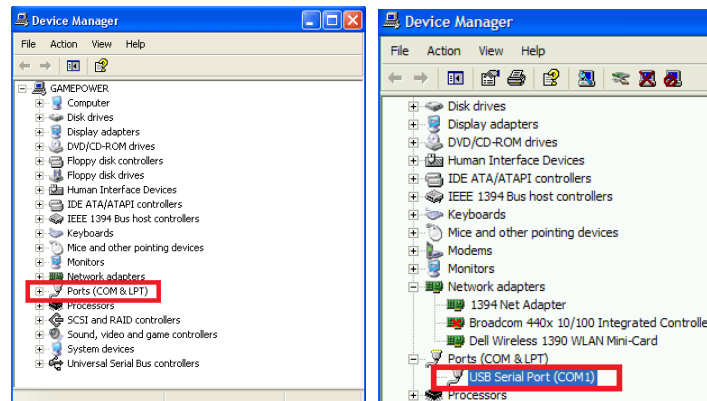
Step2. Once the unit has been properly installed and the batteries are connected well, simply press On/Off switch (located on the display panel) to turn on the unit. Make sure the LCD is lit normally.



Step3. Please check the COM Port Number as below pictures. And make sure com port number lower than ten.

NOTE: Make sure all application communication software using this COM port is turned off, including some UPS monitoring software.





Step4. Please download Communication Tool from below link:

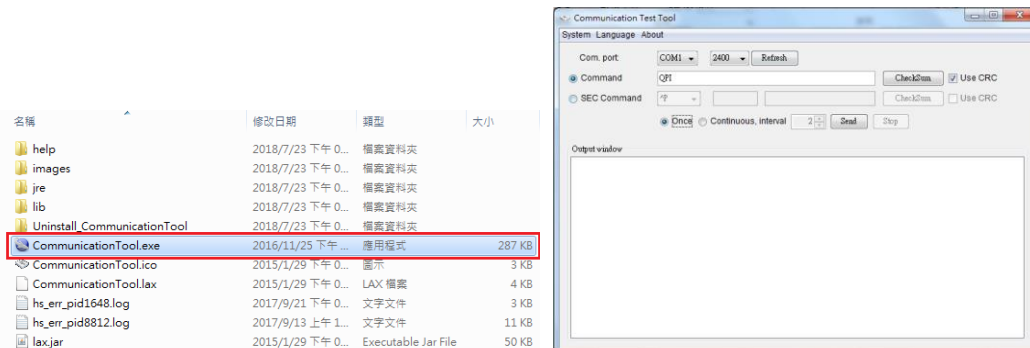
http://ftp.voltronic.com.tw/C/Communication_tool-13A957D3F9AB41B59CCB/

file name: installCommunication_Tool.zip

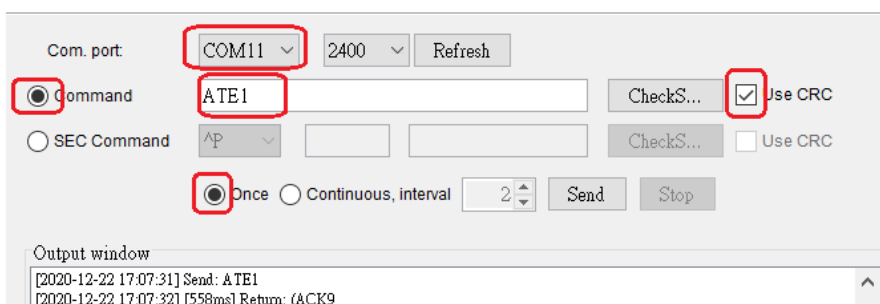
Step5. Decompress the "Communication tool.zip" file with WinZip software as below picture.

名稱	日期	類型	大小	標記
Communication tool.zip	2018/7/23 下午 04:18	壓縮的 (zipped) ...	39,806 KB	

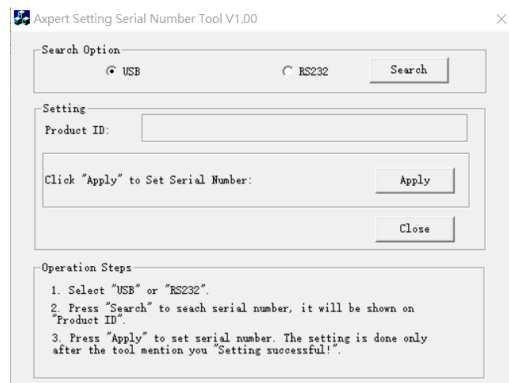
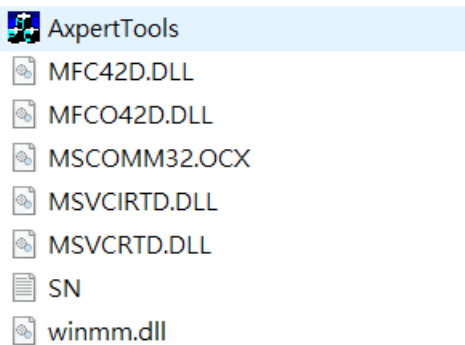
Step6. Double click" Communication Tool.exe" to execute the communication tool as below picture.



Step7. Please type "ATE1" on the command window and use CRC, then click "Send", wait for inverter return "(ACK9"

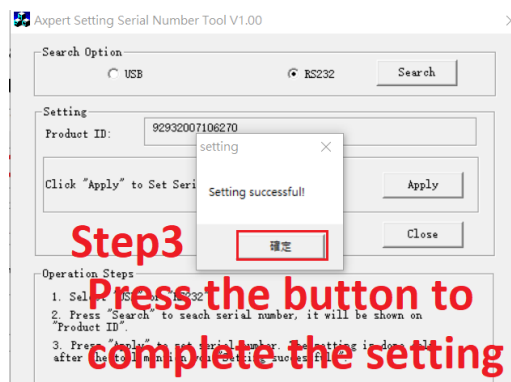
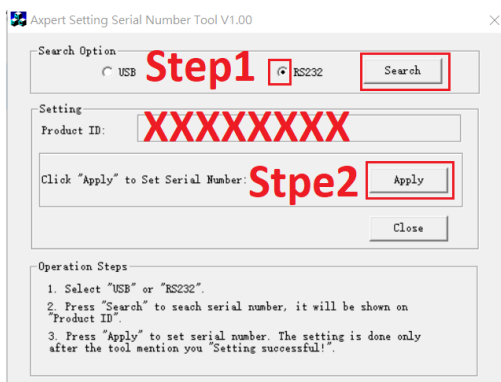


Step8. Double click AxpertTools as refer to below.



Step9. Click "RS232" and then press "Search" button to get serial number on the "Product ID".

And Press "Apply" button to setting serial number. If the setting is don after the tool mention you "Setting Successful".



Step10. Please restart the unit (totally shutdown, remove AC input and PV input)